

# FACES FROM THE PAST

Joanne Chanyi (on left)



Horand von Grafrath

Max von Stephanitz



Ann Trace bred the 1st  
whites registered in AKC in  
1917



Geraldine Rockefeller Dodge



1927 WS Show

Compilation  
By  
Terri Vest

## MUNNIKLUYSEN ..ND DOG

2.27.27

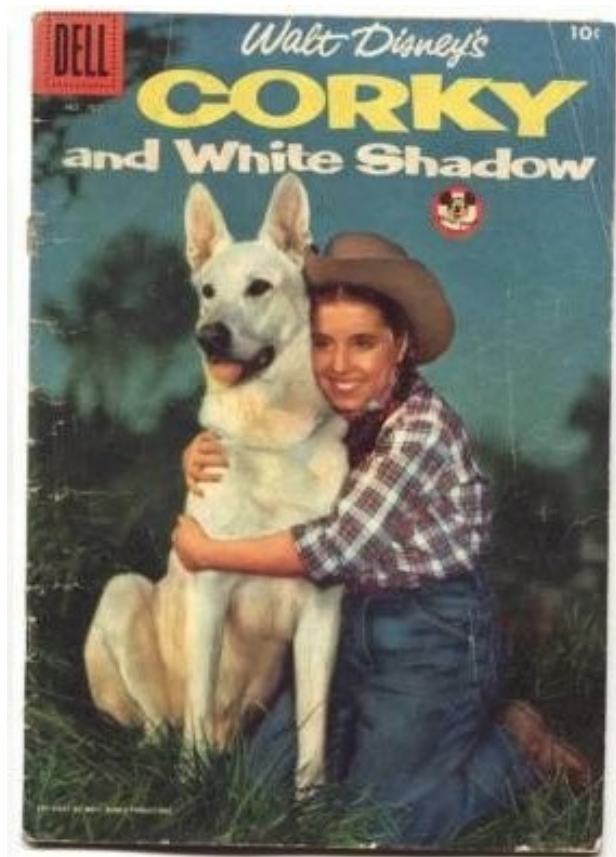
The only pure white German police dog in the United States. Atlantic City, NJ "Foust", three-years-old, owned by Pasquale Criscuolo of Atlantic City, is not only unique in his color but is recognized as being one of the finest specimens of German Police dog in existence. "Foust" was trained by Karl Nicholas, who also trained "Strongheart", the famous movie dog. Photo shows: Miss Marguerite Munnikluysen proudly displays the medals and ribbons won by "Foust" in every show he has ever entered.



WHITE SHEPHERD



Corky & White Shadow in the Mickey Mouse Club 1955-1956

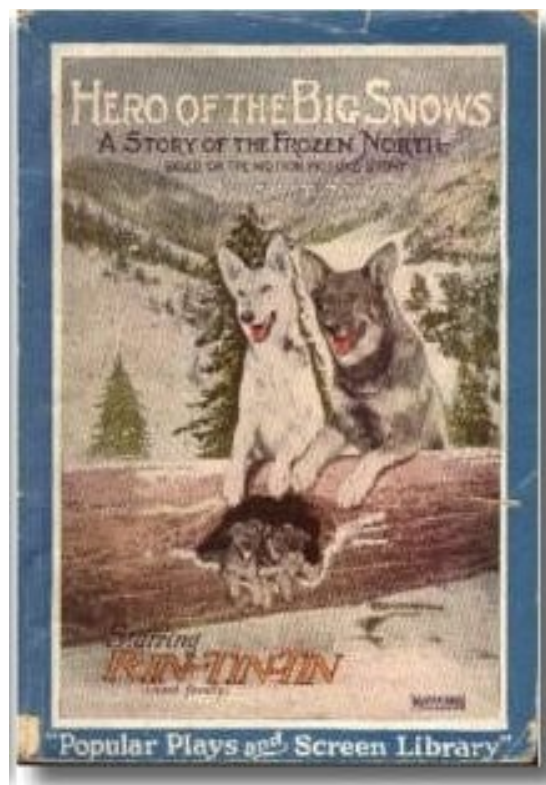


STARS



Next page for movie snapshots . . .

Featured Rin Tin Tin



I  
N  
T  
H  
E  
M  
O  
V  
I  
E  
S  
&  
T  
V





Copyright 1956 Universal Pictures Company, Inc. Permission granted for newspaper and magazine reproduction.



Copyright 1956 Universal Pictures Company, Inc. Permission granted for newspaper and magazine reproduction.



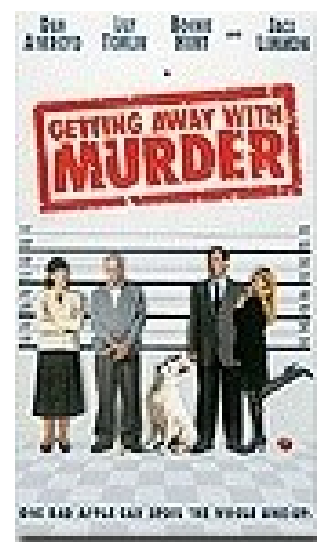
“Fang’s of the Artic” With “Chinook”



“Kazan” 1949  
Starring Stephen Dunne,  
Lois Maxwell & “Zoro”  
the dog



Timber  
Fury  
1950





# FAMOUS DOGS & OWNERS

BOB HOPE



Tom Hanks

Gregory Peck—1947—filming  
“Gentleman’s Agreement”



Gregory Peck with  
His dog “Slip”  
And her puppies



“White Dog” movie review







**June Allyson**

In this shoot for a pharmaceutical company, “the dog definitely stole the show,” wrote Bruno Bernard, “a fact that did not escape Norma Jean’s critical judgment when she looked at the proof sheets. After she became Marilyn Monroe, she saw to it that nobody stole a scene from her again.”



**David Cassidy of the TV Show Partridge Family**



**Miley**

**Cyrus**



<<Games: “The Haunting Ground” With “Hewie”

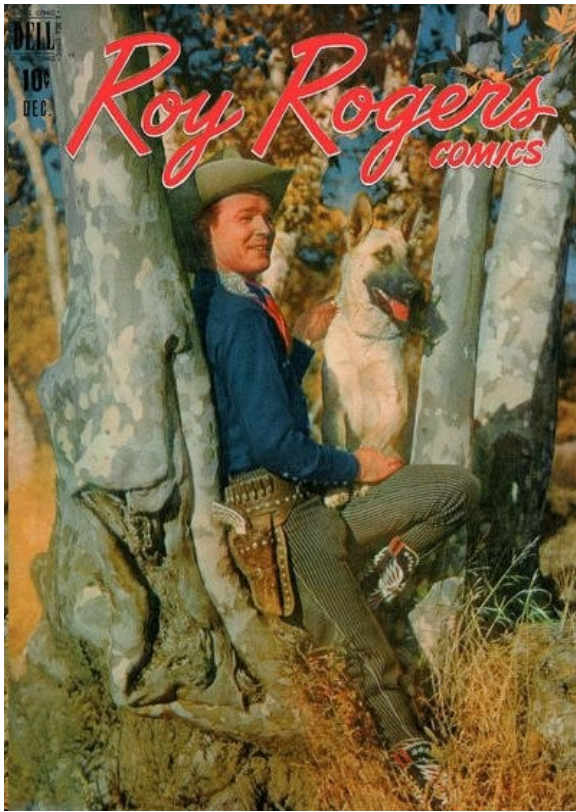
**Marion Lopizzo &  
Lily Tomlin**



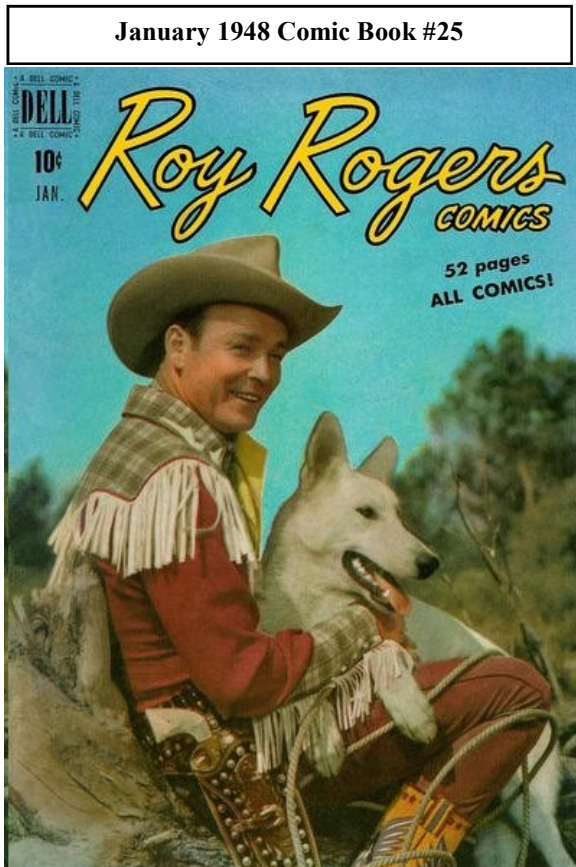
**Jennifer Aniston & "Dolly"**



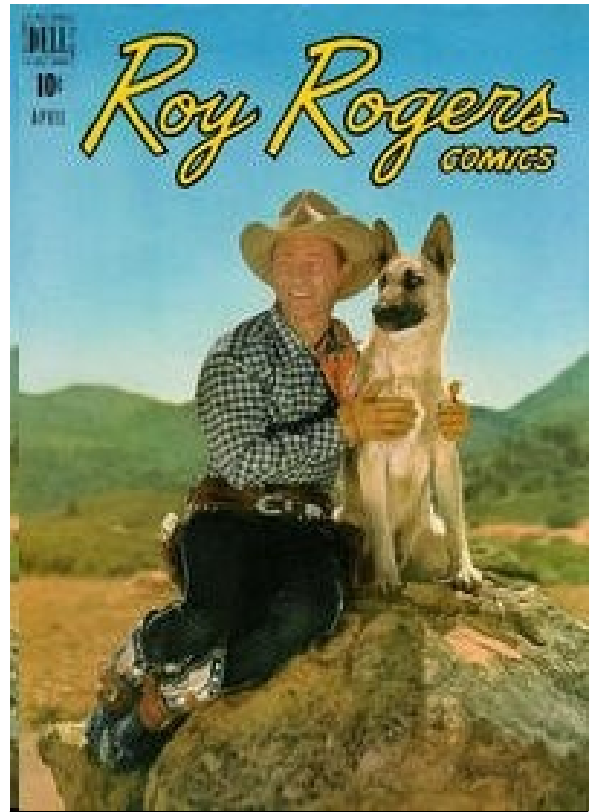




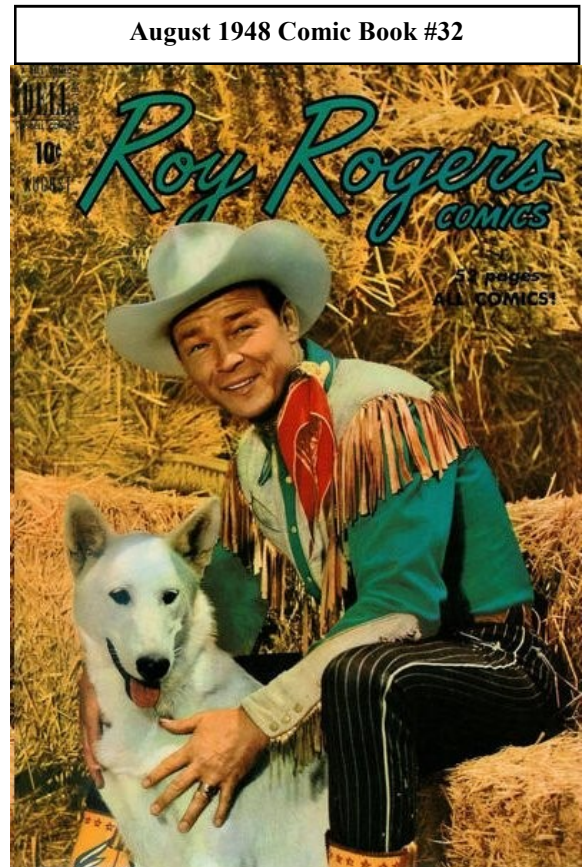
1948 Comic Book Series #12  
"Spur's" first appearance



January 1948 Comic Book #25



April 1948— #16  
Roy, & "Spur" sitting on a rock, close-up public-



August 1948 Comic Book #32

# ROY ROGERS COMICS



# ROY ROGERS

## Movies & Comic Books

### Roy Rogers Gets Dog For Movies

By Gene Handsaker  
HOLLYWOOD — Roy Rogers came striding along with his spurs jingling, cling clang cling, and introduced me to Spur, his handsome new German Shepherd, "I've only had him a week," the blue-eyed cowboy star grinned, "but already he's a one-man dog. He'll retrieve, lay down, sit up, and jump over things." Roy plans to work Spur eventually into his westerns, along with his horse Trigger.

Trigger is 14 now, but Roy is training Trigger, Jr., 2, to do the same tricks and take over when his pappy is too old for the celluloid range. "Trigger, Jr., will last me as long as I'm in pictures," Roy reckoned. Trigger, Sr., by the way, has a gleaming white saddle made entirely of plastic, trimmed with blue stars and red eagles, that set Roy back \$896.

S  
P  
U  
R



June 1948 Comic #42



## IN ADS, MAGAZINES & CALENDARS!



1948 Calendar Page



Alpo ad with Lorne Greene

## Magazine Front Covers — 1927 1943







Copyright © 1981 North Shore Investments, Ltd.  
All rights reserved.  
Permission is hereby granted to newspapers and other periodicals  
to reproduce this photograph for publicity or advertising except for  
the endorsement of products. This must not be sold, leased or given  
away. Printed in U.S.A.

# **DEATH HUNT** A Twentieth Century-Fox Release

**DH-11 ED LAUTER** is attacked by a Siberian sled-dog during a man-hunt for Charles Bronson, the man he has framed for murder, in a rugged adventure saga filmed in treacherous Arctic mountain country. Lee Marvin co-stars.

Chinook - White German shepherd from the "Corky and the White Shadow" serial seen on THE MICKEY MOUSE CLUB from 1955-59. Chinook had been billed as a "Wonder Dog" from 1949-54 in a series of movies about a dog and a Royal Canadian Mountie (played by Kirby Grant). The stories were based on the works of author James Oliver Curwood.





ABC TV Series **"LONGSTREET"** with "Mike & Pax"  
Starring James Franciscus Premiered Sept 16, 1971 (:00—10:00 EDT)  
Press Release Aug 3rd 1971

Mike Longstreet, a criminal insurance investigator, has been blinded by an explosion, but with hard work and determination he has been able to re-establish his professional reputation. Pax, his dog guide, is Longstreet's major helpmate.





# Hero's and Their Partners



Bart



Conan

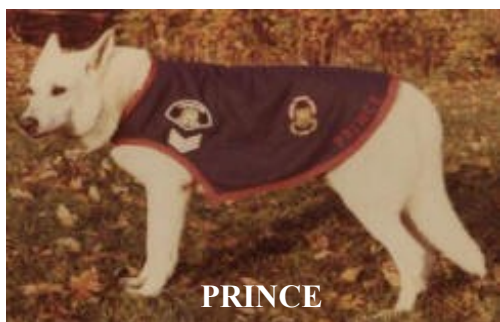


RIP



"VE-LIN'S KAISER THE ROLE  
"K9 CONAN"

1996 WGSDCI HALL OF FAME  
INDUCTEE



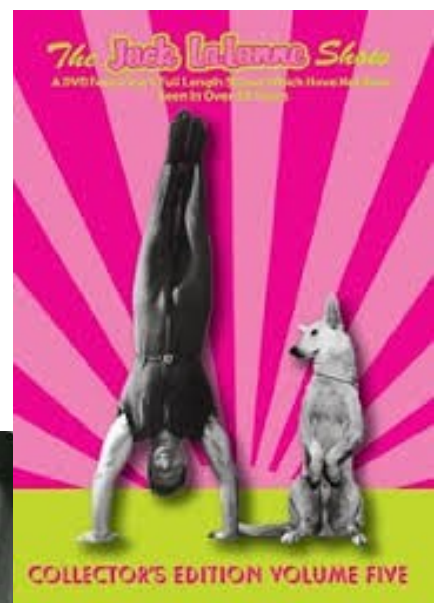
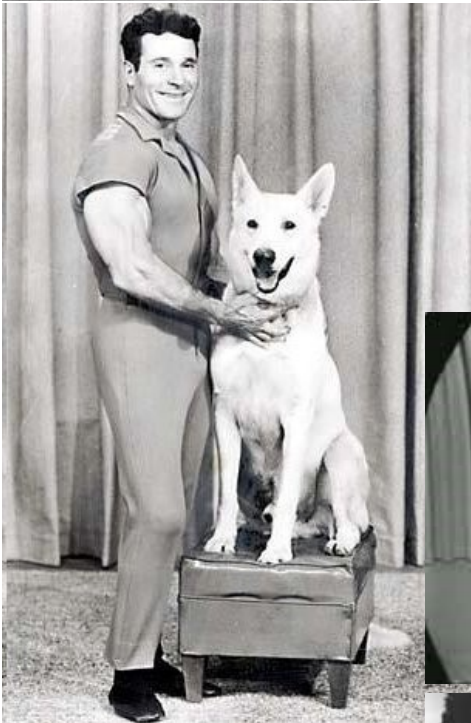
PRINCE



**JUNE**

Ve-Lin's Kaiser The Role  
"K9 Conan"  
1996 WGSDCI Hall of Fame  
Inductee

**Francois Henri "Jack" LaLanne** — presented fitness and exercise advice on television for 34 years. [\*The Jack LaLanne Show\*](#) was the longest-running television exercise program. According to the SF Chronicle TV program archives, it first began on September 28, 1953 as a 15-minute local morning program (sandwiched between the morning news and a cooking show) on [San Francisco's ABC](#) television station, [KGO-TV](#), with LaLanne paying for the airtime himself as a way to promote his gym and related health products. LaLanne also met his wife Elaine while she was working for the local station. In 1959, the ABC network picked up the show for nationwide broadcast, which continued until 1985.





# BLAST TO THE PAST



at Berlin deutsche Schutzhund "Schutzhund" von Oskar Follmann, November 1940. Foto: Fritz Krieger



DOG IS ABLE "HAND" IN HORSE TRAINER'S STABLE  
TROPICAL PARK, FLA.--FLASH, A WHITE GERMAN  
SHEPHERD DOG -- IT IS SAID THAT IN ALL THE WORLD  
LESS THAN FIFTY OF THIS COLOR ARE REGISTERED --  
IS AS GOOD A "HAND" AS HIS OWNER, J. J. ROSSI,  
HAS IN HIS STABLE AT TROPICAL PARK. ROSSI, A  
SUCCESSFUL HORSE TRAINER, HAS A FOUR-HORSE  
STRING AT THE POPULAR FLORIDA COURSE. FROM THE  
TIME THE ALARM CLOCK RINGS SHORTLY AFTER  
5 O'CLOCK EACH MORNING, UNTIL THE DAILY CHORES  
ARE DONE, FLASH HAS HIS WORK CUT OUT FOR HIM.

641793.....NEW YORK RIDEALL  
THE TAUTNESS OF THE SHANK DEMONSTRATES THAT  
FLASH IS REALLY DOING THE LEADING. THE HORSE  
AT TIMES ATTEMPTS TO HALT OR CHANGE HIS COURSE,  
BUT THE DOG INVARIABLY DISCOURAGES SUCH EFFORTS  
BY EXERTING PRESSURE ON THE SHANK.  
CREDIT LINE: (ACIC) 3-18-42 (SA)  
71A 80



**JUST MORE...**



**Lonni & Rex von Finn**

**Bruce Springsteen**





## A Connection from the Past— Now a Different Breed



WHITE ALSATIAN DOG

Fewer dog breeds appear as similar as the Alsatian (officially known as the Alsatian shepalute or American Alsatian) and the German shepherd, and fewer breeds are so radically different. Matching only in appearance, these two breeds derive from different places and are bred for different purposes. While the Alsatian bloodline does have German shepherd in it, it has since diverged, and the Alsatian has been identified as a separate breed

(<http://germanshepherdsinfo.blogspot.com/2010/06/what-is-difference-between-alsatian.html>)